

BMC SecOps Response Service

Eliminate risks and blindspots to reduce the attack surface with an action-focused solution



PRODUCT DESCRIPTION

BMC SecOps Response Service is a SaaS-based solution that extends the power of endpoint management systems, such as BladeLogic Server Automation and Microsoft SCCM, to provide IT operations and security teams the data they need to prioritize and remediate threats based on potential impact to the business. It's native integration to popular scanning tools, such as Rapid7, Tenable, and Qualys, enables teams to quickly consume scans and automatically tie vulnerabilities to known remediations.

BUSINESS CHALLENGE

One of the largest drivers of the inability to appropriately defend organizations is still the lack of integration and coordination between security and operations teams. Security teams scan for vulnerabilities and then deliver that information to the operations team for action. **When the operations team receives information from the security team, it frequently lacks the context needed for them to take or prioritize action.** Per the 2016 Forbes/BMC study, 60% of executives indicated that the operations and security teams did not understand each other's requirements.

BMC SOLUTION

BMC SecOps Response Service prioritizes risks and reduces your overall attack surface by providing operations teams with prescriptive and actionable data to address vulnerabilities based on perceived impact and policy. It also offers security teams a transparent view into operational plans by providing visibility into planned actions, predictive SLAs, and burndown views. Through integration with BMC Discovery, security and operations teams can identify blindspots—systems previously unknown or unmanaged—and make adjustments.



KEY FEATURES

BMC SecOps Response Service provides security teams and operations teams unprecedented visibility into their environments' threat stature for efficient remediation of risks.

Security

- Visualize how quickly threats will be eliminated with graphical views of planned operations actions, predictive SLAs, and burndowns
- Identify blindspots in the security process and make adjustments

Operations

- Focus actions on highest priority items, and highlight areas of concern for the business
- Import scans and instantly tie vulnerabilities to remediation
- Make security data actionable

KEY BENEFITS

- **Build security and compliance practices** that are flexible, scalable, and agile
- **Protect uptime and maintain stability**, while nimbly building the right defenses
- **Increase security** by combatting attackers with vigilant compliance, precise analytics, and relentless remediation

- ◀ Use the Security Dashboard to quickly see the status of vulnerabilities.

PRODUCT DETAILS

Powerful Dashboards: Evaluate risks in your environment through the use of two BMC SecOps Response Service dashboards designed specifically to suit the requirements of both operations and security users. Quickly prioritize remediation activities based on policy. Identify performance trends and manage vulnerabilities through their lifecycle.

Data Export for Deeper Analysis: Export the data driving the dashboards to develop and share custom reports and meet audit requirements.

Vulnerability Exclusions: Exclude scan information known to be incorrect from affecting your analysis and reporting.

Existing Schedule Confirmation: Focus only on the vulnerabilities that need attention by filtering out activities that have already been started.

Blindspot Awareness: Quickly identify the areas of your infrastructure that are not being monitored, leaving you exposed, and make adjustments leveraging integration with BMC Discovery.

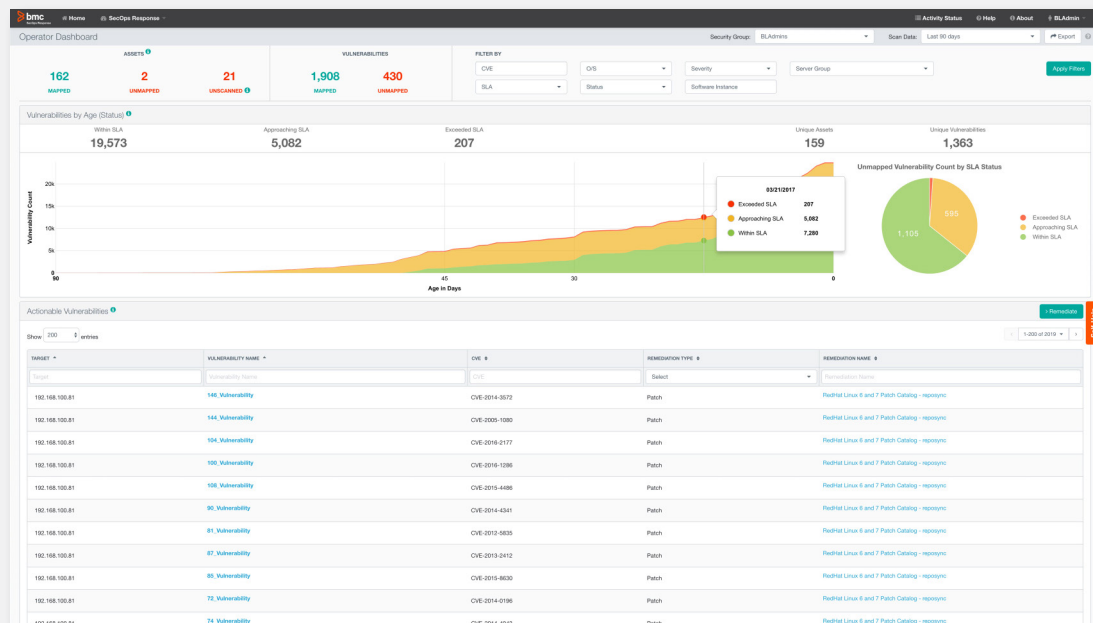
Auto-Scan Import: Save time and respond to known threats quicker by auto-importing scan exports from Qualys, Nessus, and Rapid7.


Streamlined Remediation Workflow: Schedule your scan verification and remediation within the same workflow.

Patching & Compliance: Combine with popular endpoint management systems, such as BladeLogic Server Automation and Microsoft SCCM, to keep your infrastructure in peak condition by applying patches with ease, reducing downtime, and preventing potential security breaches.

FOR MORE INFORMATION

To learn more about BMC SecOps Response Service, please visit bmc.com/it-solutions/bladeologic-threat-director



 The Operator Dashboard provides a holistic view of all known threats.

BMC is a global leader in innovative software solutions that enable businesses to transform into digital enterprises for the ultimate competitive advantage. Our Digital Enterprise Management solutions are designed to fast track digital business from mainframe to mobile to cloud and beyond.

BMC digital IT transforms 82 percent of the Fortune 500.



BMC, BMC Software, the BMC logo, and the BMC Software logo, and all other BMC Software product and service names are owned by BMC Software, Inc. and are registered or pending registration in the US Patent and Trademark Office or in the trademark offices of other countries. All other trademarks belong to their respective companies. © Copyright 2017 BMC Software, Inc.

